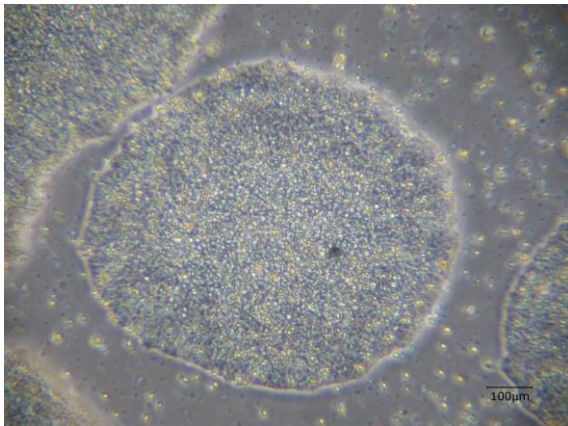
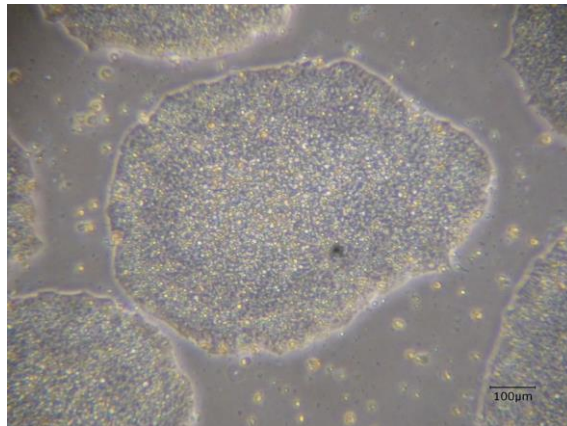


## 【 CiRA-j-1086 】 Morphology of iPSC colonies

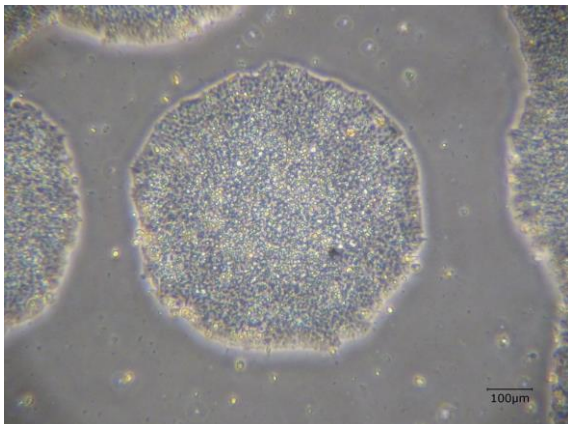
CiRA-j-1086-A: passage-3



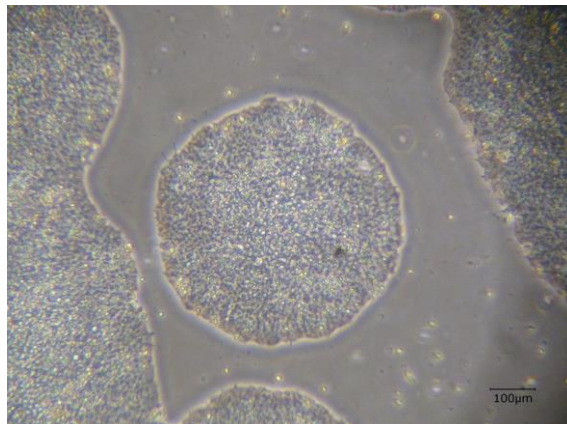
CiRA-j-1086-B: passage-3



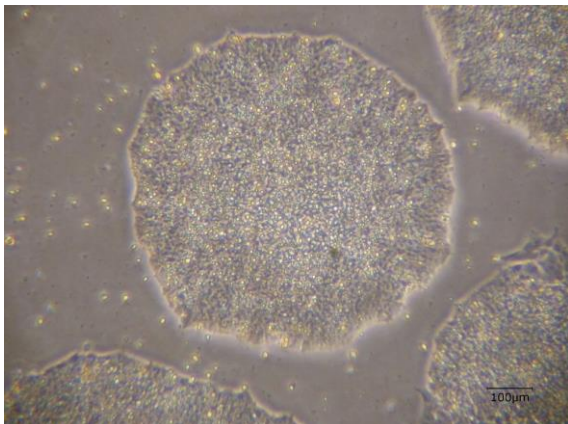
CiRA-j-1086-C: passage-3



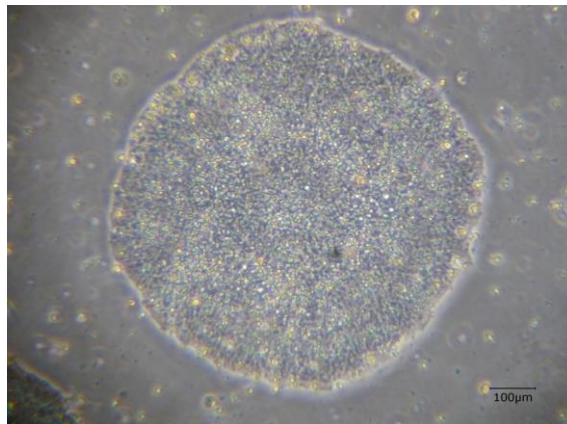
CiRA-j-1086-D: passage-3



CiRA-j-1086-E: passage-3



CiRA-j-1086-F: passage-3



( All images were captured at 4x magnification )